



# The Kingspan **KoolDuct**® System

CATALOG OF MATERIALS, TOOLS & ACCESSORIES



*Low Energy –  
Low Carbon Buildings*

# Contents

	Page
<u>Introduction</u>	3
<u><i>Kingspan</i> <b>KoolDuct</b><sup>®</sup> Panels &amp; Ancillaries</u>	4
<u><i>Kingspan</i> <b>KoolDuct</b><sup>®</sup> Flanges &amp; Accessories</u>	5
<u><i>Kingspan</i> <b>KoolDuct</b><sup>®</sup> Reinforcements</u>	7
<u><i>Kingspan</i> <b>KoolDuct</b><sup>®</sup> Fabrication Tools &amp; Spare Parts</u>	8
<u><i>Kingspan</i> <b>KoolDuct</b><sup>®</sup> Jack Planes &amp; Holders</u>	10
<u><i>Kingspan</i> <b>KoolDuct</b><sup>®</sup> Blades</u>	11

## *A Note About this Document*

- a. All measurements given in this document are approximate.
- b. Pack / unit sizes are given in the order of: length x width x height, depth or diameter.
- c. *Kingspan* **KoolDuct**<sup>®</sup> System Delivery Partners may not stock all items shown in this document.
- d. *Kingspan Insulation Ltd* reserves the right to change any information contained in this document without prior notice.

# Introduction

## What is The *Kingspan KoolDuct*<sup>®</sup> System?

The *Kingspan KoolDuct*<sup>®</sup> System comprises premium performance *Kingspan KoolDuct*<sup>®</sup> panels, fabrication methods, coupling systems and a complete line of accessories to produce pre-insulated rectangular ductwork in sections up to 13 ft / 3.93 m long. *Kingspan KoolDuct*<sup>®</sup> panels are available in the following standard thicknesses and corresponding installed R-values:

- $\frac{7}{8}$ " = R-6.0 ft<sup>2</sup>·hr·°F/Btu /  
22 mm = R-1.047 m<sup>2</sup>·K/W; and
- $1 \frac{3}{16}$ " = R-8.1 ft<sup>2</sup>·hr·°F/Btu /  
30 mm = R-1.428 m<sup>2</sup>·K/W.
- $1 \frac{49}{64}$ " = R-12.0 ft<sup>2</sup>·hr·°F/Btu /  
45 mm = R-2.15 m<sup>2</sup>·K/W.

This allows ductwork to be fabricated with different wall thicknesses to suit different performance specifications.

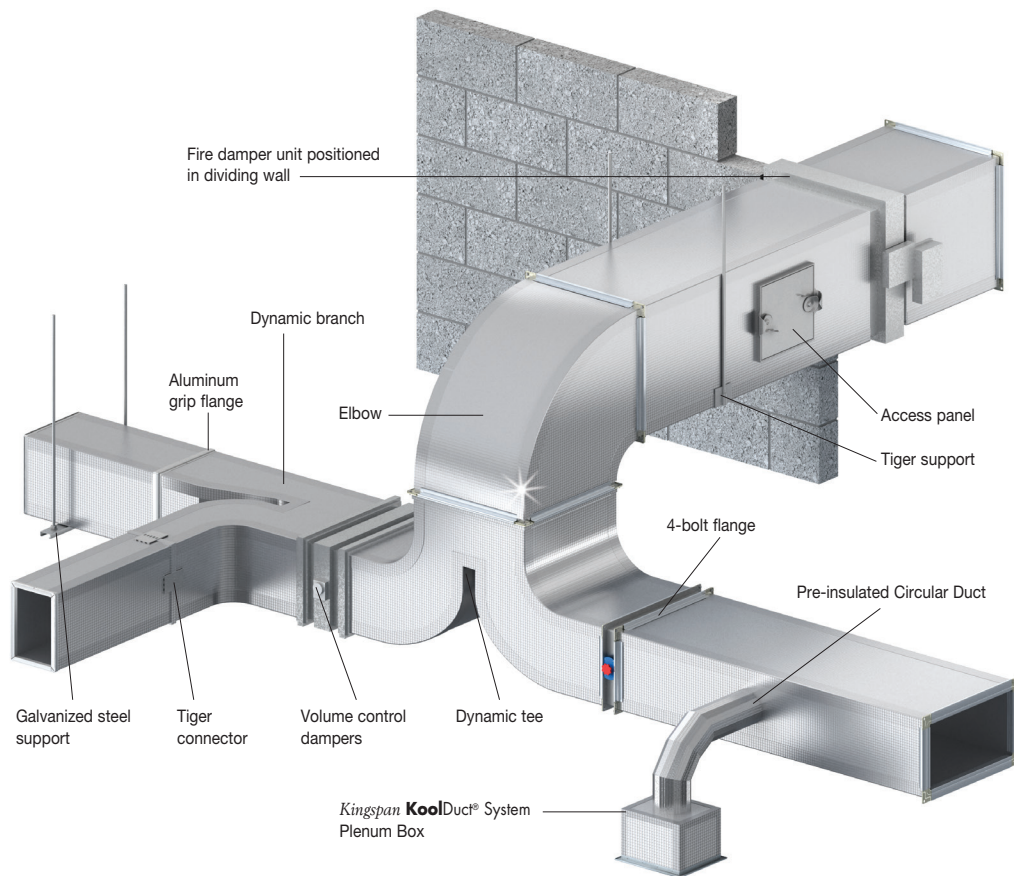
In addition, there are several coupling systems available to suit different installation and project specification requirements. They include the 4-bolt, aluminum grip and Tiger Clip systems.

## Availability

Kingspan Insulation offers a complete product line, providing all materials, tools and accessories necessary for the effective fabrication of ductwork from The *Kingspan KoolDuct*<sup>®</sup> System, each of which are shown in this document. To facilitate a single source supply, the complete product line is available to purchase through appointed *Kingspan KoolDuct*<sup>®</sup> System Delivery Partners, a list of which is supplied at [www.kingspaninsulation.us](http://www.kingspaninsulation.us).

Each component has been rigorously tested in the field, in a variety of ductwork applications, to the highest performance standards. This ensures that the quality of the materials from which ductwork from The *Kingspan KoolDuct*<sup>®</sup> System is fabricated, meets the standards required by Kingspan Insulation.

As a result, under no circumstances are unapproved components to be used in place of the coupling systems, adhesive, silicone sealant and aluminum tape supplied by Kingspan Insulation. Prior approval in writing should be obtained from Kingspan Insulation (see rear cover) for the use of alternative materials.



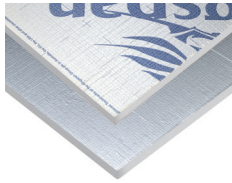
# Kingspan **KoolDuct**® Panels & Ancillaries

## Kingspan **KoolDuct**® Panel (7/8" = R-6.0)



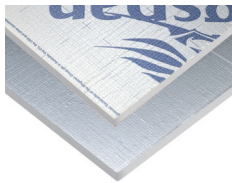
Pack Quantity	4 x 50.76 sq.ft
Pack Weight	68.6 lb
Pack Size	12.89' x 3.94' x 0.29'
Panel Size	12.89' x 3.94' x 7/8"
Panel Facings	Silver Branded / Silver Plain
Outer Packaging	Plastic Bag

## Kingspan **KoolDuct**® Panel (1 3/16" = R-8.1)



Pack Quantity	5 x 50.76 sq.ft
Pack Weight	111.8 lb
Pack Size	12.89' x 3.94' x 0.49'
Panel Size	12.89' x 3.94' x 1 3/16"
Panel Facings	Silver Branded / Silver Plain
Outer Packaging	Plastic Bag

## Kingspan **KoolDuct**® Panel (1 49/64" = R-12.0)



Pack Quantity	3 x 50.76 sq.ft
Pack Weight	101.99 lb
Pack Size	12.89' x 3.94' x 0.44'
Panel Size	12.89' x 3.94' x 1 49/64"
Panel Facings	Silver Branded / Silver Plain
Outer Packaging	Plastic Bag

## Silicone Sealant 231G



Pack Quantity	24 x 10.48 fl. oz
Pack Weight	22 lb
Pack Size	11.8" x 7.9" x 9.4"
Outer Packaging	Cardboard Box

## Adhesive 212



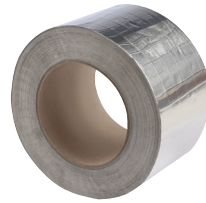
Pack Quantity	4 x 1.1 Gal. (4 x 9 lb)
Pack Weight	42 lb
Pack Size	15.7" x 11.2" x 11.4"
Outer Packaging	Cardboard Box

## Smooth Aluminum Tape UL Listed (3") 223



Pack Quantity	16 x 180 ft
Pack Weight	44 lb
Pack Size	12.2" x 12.2" x 12.6"
Outer Packaging	Cardboard Box
*Non stocked	

## Reinforced Aluminum Tape (3") 221



Pack Quantity	16 x 164 ft
Pack Weight	31 lb
Pack Size	10.6" x 10.6" x 12.4"
Outer Packaging	Cardboard Box

## Gasket 242



Unit Quantity	33 x 6.6 ft
Pack Weight	3 lb
Pack Size	39.8" x 19.7" x 1.2"
Outer Packaging	None - Loose Item

## Aluminum Tiger Support 266



Pack Quantity	150
Pack Weight	13 lb
Pack Size	15.7" x 15.7" x 8.7"
Outer Packaging	Cardboard Box

## Labels for Finished Ductwork\* 800



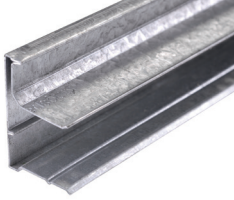
Unit Quantity	3 Labels / A4 Sheet
Unit Weight	0.02 lb
Pack Size	11.8" x 8.3" x 3.4"
Outer Packaging	Paper Envelope

\*Supplied free of charge with each pack of Kingspan **KoolDuct**® panels.

# Kingspan **KoolDuct**® Flanges & Accessories

4-bolt Flange  
for 7/8" Panel

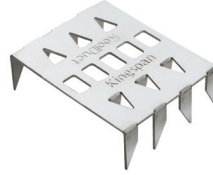
380



Unit Quantity	1
Unit Weight	6 lb
Unit Size	13.1' x 1.8" x 1.2"
Outer Packaging	None - Loose Item

Aluminum Tiger Clip

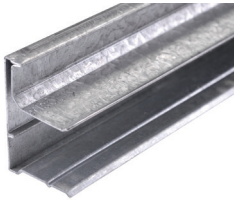
364



Pack Quantity	500
Pack Weight	6 lb
Pack Size	11" x 8.7" x 7.9"
Outer Packaging	Cardboard Box

4-bolt Flange  
for 1 3/16" Panel

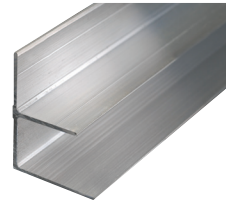
383



Unit Quantity	1
Unit Weight	7 lb
Unit Size	13.1' x 2.2" x 1.2"
Outer Packaging	None - Loose Item

Structural F Aluminum Flange  
for 7/8" Panel

332



Unit Quantity	1
Unit Weight	3 lb
Unit Size	13.1' x 1.6" x 1.8"
Outer Packaging	None - Loose Item

4-bolt Flange Corner Piece  
for 7/8" Panel

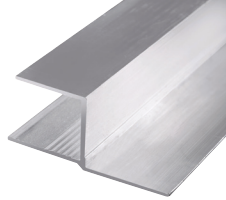
258



Pack Quantity	250
Pack Weight	31 lb
Pack Size	15.7" x 7.5" x 13.4"
Outer Packaging	Cardboard Box

Structural h Aluminum Flange  
for 7/8" Panel

333



Unit Quantity	1
Unit Weight	3 lb
Unit Size	13.1' x 2.4" x 1.2"
Outer Packaging	None - Loose Item

4-bolt Flange Corner Piece  
for 1 3/16" Panel

268



Pack Quantity	250
Pack Weight	44 lb
Pack Size	15.7" x 7.9" x 13.4"
Outer Packaging	Cardboard Box

Structural U Aluminum Flange  
for 7/8" Panel

334



Unit Quantity	1
Unit Weight	2 lb
Unit Size	13.1' x 1.4" x 1"
Outer Packaging	None - Loose Item

Aluminum Tiger Unit

363



Pack Quantity	500
Pack Weight	11 lb
Pack Size	15.7" x 15.7" x 8.7"
Outer Packaging	Cardboard Box

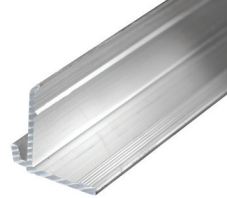
# Kingspan **KoolDuct**® Flanges & Accessories

Internal Aluminum Grip Flange for 7/8" Panel\* 311



Unit Quantity	1
Unit Weight	2 lb
Unit Size	13.1' x 1" x 1.2"
Outer Packaging	None - Loose Item

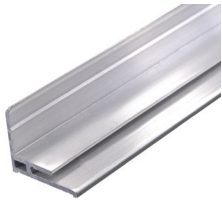
External Aluminum Grip Flange for 7/8" & 1 3/16" Panels\* 312



Unit Quantity	1
Unit Weight	2 lb
Unit Size	13.1' x 1.2" x 1"
Outer Packaging	None - Loose Item

*\*For use with items 321 & 311 or 317.*

Internal Aluminum Grip Flange for 1 3/16" Panel 317



Unit Quantity	1
Unit Weight	2 lb
Unit Size	13.1' x 1.4" x 1.4"
Outer Packaging	None - Loose Item

Aluminum Bayonet Cleat for 7/8" & 1 3/16" Panels\* 321



Unit Quantity	1
Unit Weight	1.5 lb
Unit Size	13.1' x 1.4" x 0.2"
Outer Packaging	None - Loose Item

*\*For use with item 312.*

# Kingspan **KoolDuct**® Reinforcements

Reinforcement Disc

353



Pack Quantity	100
Pack Weight	4 lb
Pack Size	6.3" x 3.9" x 3.9"
Outer Packaging	Cardboard Box

# Kingspan **KoolDuct**® Fabrication Tools & Spare Parts

## Portable Work Table (13.1' x 3.94') 411



Unit Quantity	1
Pack Weight	225 lb
Pack Size	78.7" x 47.2" x 7.1"
Outer Packaging	None - Loose Item

## Set Square Rule (3.94') 436



Unit Quantity	1
Unit Weight	5 lb 12 oz
Unit Size	3.94' x 24.4" x 11.8"
Outer Packaging	None - Loose Item

## Cutting Mat (13.1' x 3.94') 414



Unit Quantity	1
Pack Weight	10 lb
Pack Size	49.2" x 7.9" x 7.9"
Outer Packaging	Cardboard Box

## Bending Guide\* 445



Unit Quantity	1
Unit Weight	6 lb
Unit Size	28" x 23.6" x 3.9"
Outer Packaging	None - Loose Item

\*For use with item 441.

## Portable Tool Box Set 421u



Unit Quantity	1
Pack Weight	27 lb
Pack Size	18.9" x 13.4" x 6.3"
Outer Packaging	Cardboard Box

## Round Hole Cutter\* 443



Unit Quantity	1
Unit Weight	1 lb
Unit Size	13" x 1.6" x 3.5"
Outer Packaging	Shrink-wrap

\*For use with 7/8" panel.

## Clamping Rule (13.1') 431



Unit Quantity	1
Pack Weight	16 lb
Pack Size	14.1' x 3.1" x 1.6"
Outer Packaging	None - Loose Item

## Clamping Rule (3.94') 433



Unit Quantity	1
Pack Weight	8 lb
Pack Size	4.9' x 3.1" x 1.6"
Outer Packaging	None - Loose Item



# Kingspan **KoolDuct**® Fabrication Tools & Spare Parts

## Tape Marker

521



Unit Quantity	1
Unit Weight	0.7 lb
Unit Size	4.9" x 3.3" x 0.8"
Outer Packaging	None - Loose Item

## Extended Silicone Tool

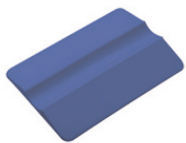
444



Unit Quantity	1
Unit Weight	4.4 lb
Unit Size	74.8" x 8.5" x 2.8"
Outer Packaging	None - Loose Item

## Flexible Spatula

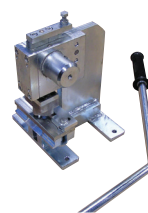
525



Pack Quantity	5
Pack Weight	0.2 lb
Pack Size	3.9" x 3" x 2.6"
Outer Packaging	Plastic Bag

## Grip Notcher\*

451



Unit Quantity	1
Unit Weight	29 lb
Pack Size	9.1" x 9.1" x 22.8"
Outer Packaging	Cardboard Box

*\*For use with items 312, 313, 314 & 315.*

## Rigid Spatula

526



Unit Quantity	1
Unit Weight	0.2 lb
Pack Size	8.1" x 2" x 1.8"
Outer Packaging	Plastic Bag

## Kool Clamp\*

453



Unit Quantity	1
Unit Weight	0.7 lb
Unit Size	7.5" x 3.5" x 1.6"
Outer Packaging	Shrink-wrap

*\*For use with item 312.*

## Manual Bending Machine

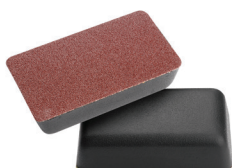
441



Unit Quantity	1
Unit Weight	93 lb
Unit Size	51.2" x 7.1" x 15"
Outer Packaging	None - Loose Item

## Abrasive File

562



Unit Quantity	1
Unit Weight	0.2 lb
Pack Size	4.5" x 2.6" x 1.2"
Outer Packaging	Plastic Bag

# Kingspan **KoolDuct**<sup>®</sup> Jack Planes & Holders

Jack Plane Left (45° Single Blade) 514  
for 7/8", 1 3/16" & 1 5/16" Panels\*



Unit Quantity	1
Unit Weight	1 lb 5 oz
Unit Length	4"
Unit Width	2 3/4"
Unit Height	3 3/4"
Outer Packaging	Shrink-wrap

\*Includes item 741 for 7/8" panel.  
For 1 3/16" & 1 5/16" panels use with item 744.

Jack Plane (22.5° V Dual Blade) 512  
for 7/8" Panel\*



Unit Quantity	1
Pack Weight	3 lb
Pack Size	8.7" x 5.5" x 4.3"
Outer Packaging	Shrink-wrap

\*For use with item 741.

Jack Plane Right (45° Single Blade) 515  
for 7/8", 1 3/16" & 1 5/16" Panels\*



Unit Quantity	1
Unit Weight	1 lb 5 oz
Unit Length	4"
Unit Width	2 3/4"
Unit Height	3 3/4"
Outer Packaging	Shrink-wrap

\*Includes item 741 for 7/8" panel.  
For 1 3/16" & 1 5/16" panels use with item 744.

Jack Plane (45° Dual Blade) 516  
for 1 3/16" Panel\*



Unit Quantity	1
Pack Weight	4 lb
Pack Size	8.3" x 5.5" x 4.7"
Outer Packaging	Shrink-wrap

\*For use with item 744.

Jack Plane (90° Single Blade) 513  
for 7/8", 1 3/16" & 1 5/16" Panels\*



Unit Quantity	1
Unit Weight	1 lb 5 oz
Unit Length	4"
Unit Width	2 3/4"
Unit Height	3 3/4"
Outer Packaging	Shrink-wrap

\* Includes item 741 for 7/8" panel.  
For 1 3/16" & 1 5/16" panels use with item 744.

Jack Plane (22.5° V Dual Blade) 519  
for 1 3/16" Panel\*



Unit Quantity	1
Pack Weight	3 lb
Pack Size	8.3" x 5.5" x 4.3"
Outer Packaging	Shrink-wrap

\*Includes item 741.

Jack Plane (45° Dual Blade) 511  
for 7/8" Panel\*



Unit Quantity	1
Unit Weight	2 lb 14 oz
Unit Length	9"
Unit Width	5 1/2"
Unit Height	4"
Outer Packaging	Shrink-wrap

\* Includes item 741.

Jack Plane Holder 500



Unit Quantity	1
Unit Weight	1 lb
Unit Size	9.1" x 3.1" x 2.4"
Outer Packaging	None - Loose Item

# Kingspan **KoolDuct**® Blades

Jack Plane Blade  
for 7/8" Panel\*

741



Pack Quantity	10
Pack Weight	0.1 lb
Pack Size	4.3" x 3.1" x 0.4"
Outer Packaging	Plastic Bag

*\*For use with items 511, 512, 513, 514, 515 & 519.*

Blade & Holder  
for 7/8" & 1 3/16" Panel\*

747



Pack Quantity	1 x Blade & 1 x Holder
Pack Weight	0.2 lb
Pack Size	6.3" x 4.7" x 0.4"
Outer Packaging	Plastic Sheath

*\*For use with item 443.*

Jack Plane Blade  
for 1 3/16" Panel\*

744



Unit Quantity	1
Pack Weight	0.02 lb
Pack Size	4.7" x 0.8" x 0.2"
Outer Packaging	Plastic Bag

*\*For use with items 513, 514, 515 & 516.*

## Contact Details

### Sales and Technical Support

Tel 1 800 241 4402

Fax 1 678 589 7325

email [info@kingspaninsulation.us](mailto:info@kingspaninsulation.us)

website [www.kingspaninsulation.us](http://www.kingspaninsulation.us)

*Kingspan Insulation LLC believes the information and recommendations herein to be accurate and reliable. However, since use conditions are not within its control, Kingspan Insulation LLC does not guarantee results from use of such products or other information herein and disclaims all liability from any resulting damage or loss. No warranty, express or implied, is given as to the merchantability, fitness for particular purpose, or otherwise with respect to the products referred to.*



### **Kingspan Insulation LLC**

2100 RiverEdge Parkway, Suite 175, Atlanta, Georgia 30328  
[info@kingspaninsulation.us](mailto:info@kingspaninsulation.us)

**1-800-241-4402**

**[www.kingspaninsulation.us](http://www.kingspaninsulation.us)**

**[www.kingspaninsulation.ca](http://www.kingspaninsulation.ca)**

® Kingspan and the Lion Device are Registered Trademarks of the Kingspan Group plc in the US, Canada and other countries. All rights reserved.

® KoolDuct is a Registered Trademark of the Kingspan Group plc in the US and other countries. All rights reserved.